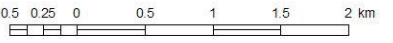


Data Source: HRM  
 Projection: 3°MTM, Zone 5  
 Horizontal Datum: ATS77  
 March 2006

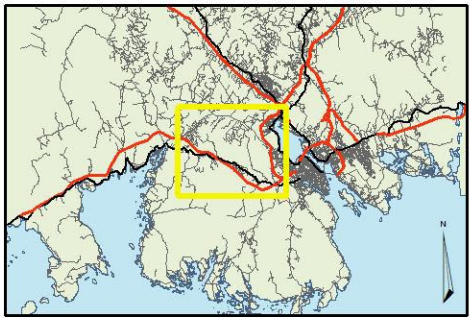
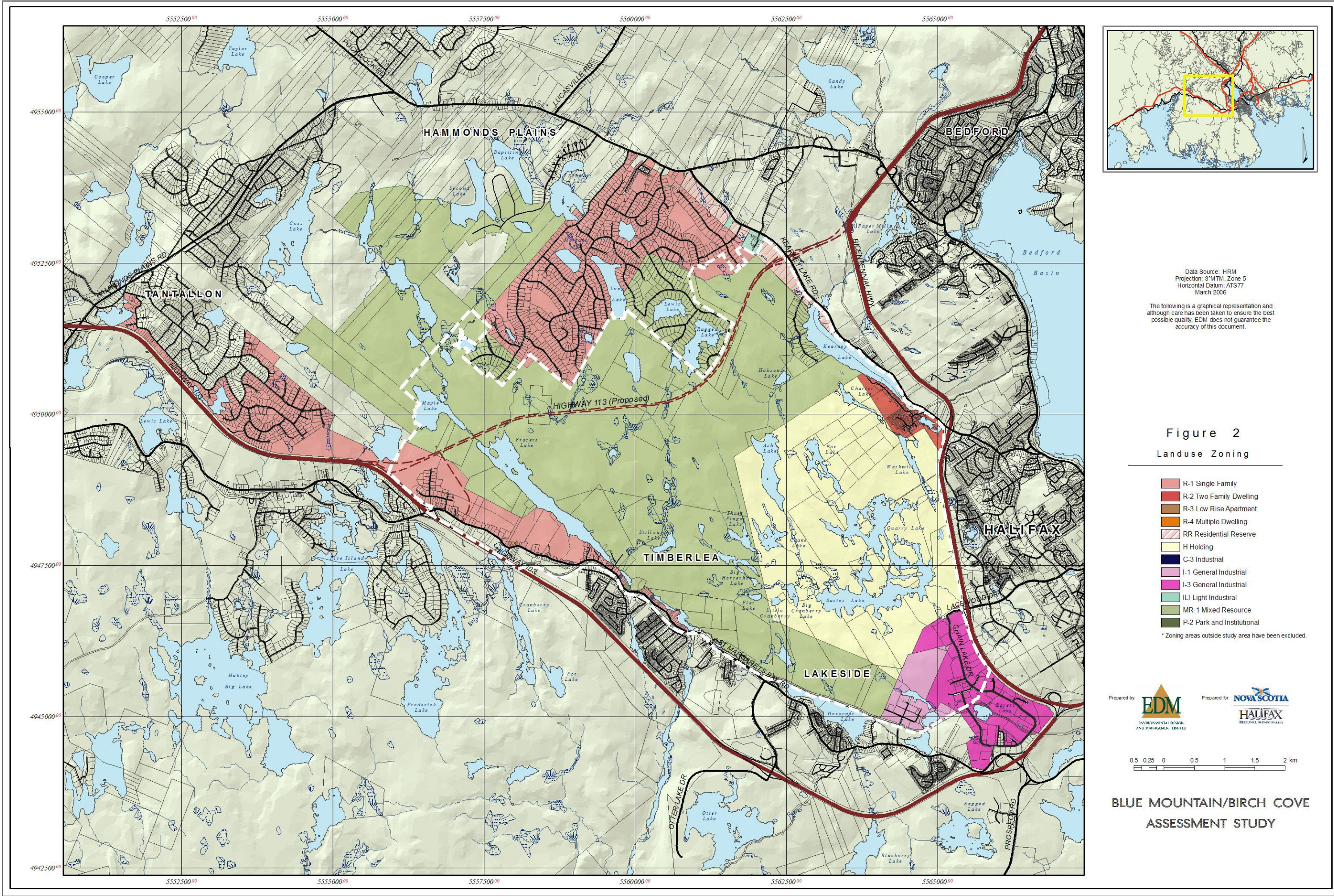
The following is a graphical representation and although care has been taken to ensure the best possible quality, EDM does not guarantee the accuracy of this document.

**Figure 1B**  
**Crown & Government Owned Land**

- Federal Ownership
- Provincial Ownership
- Municipal Ownership
- Private Ownership



**BLUE MOUNTAIN/BIRCH COVE  
 ASSESSMENT STUDY**



Data Source: HRM  
 Projection: 3°MTM, Zone 5  
 Horizontal Datum: ATS77  
 March 2006

The following is a graphical representation and although care has been taken to ensure the best possible quality, EDM does not guarantee the accuracy of this document.

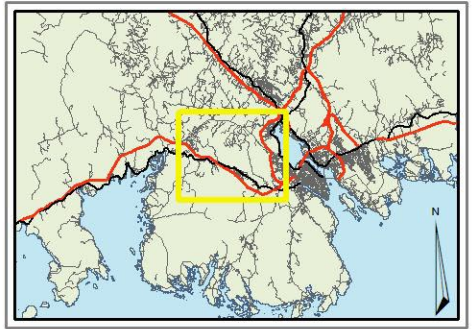
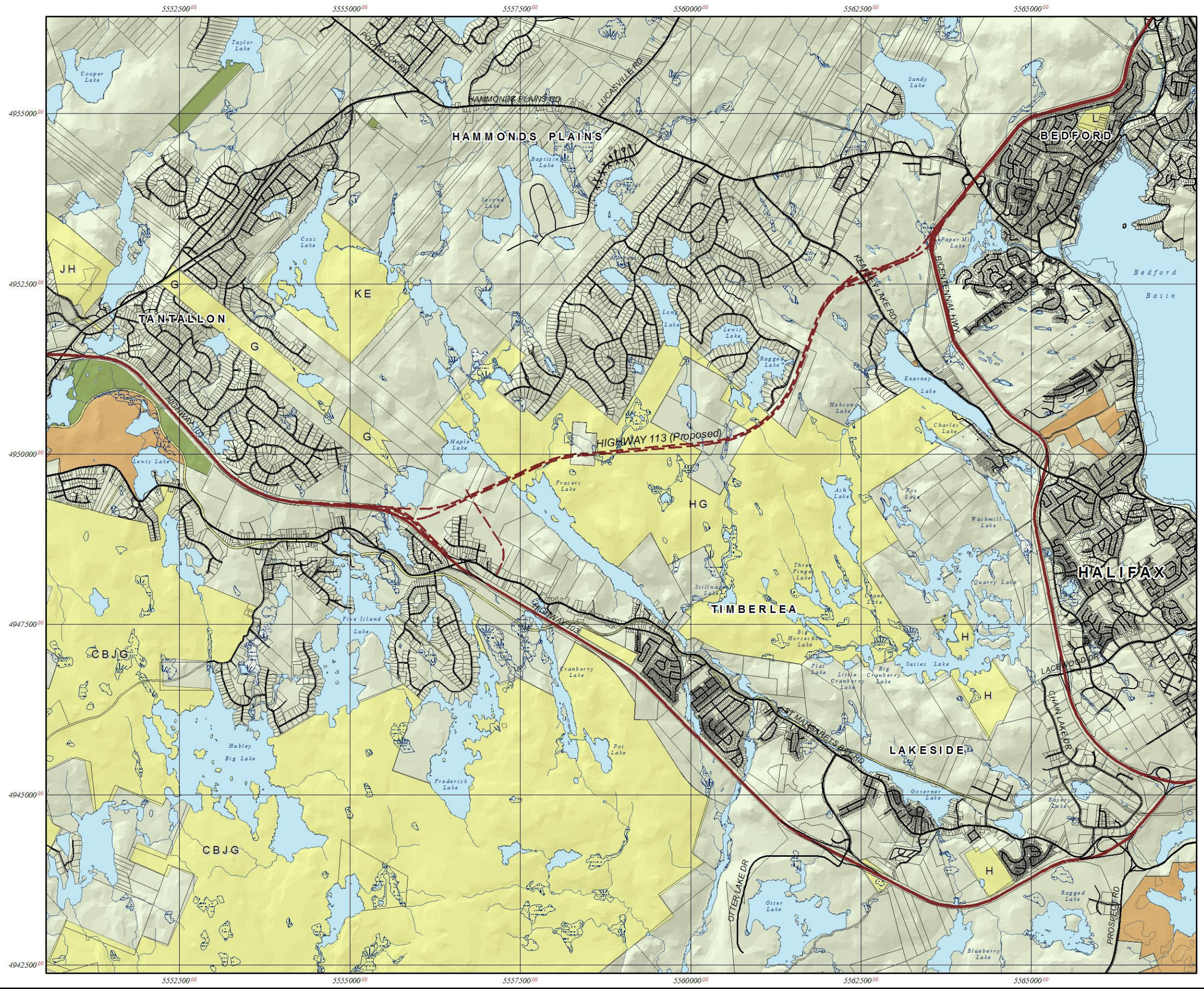
**Figure 2**  
 Landuse Zoning

- R-1 Single Family
  - R-2 Two Family Dwelling
  - R-3 Low Rise Apartment
  - R-4 Multiple Dwelling
  - RR Residential Reserve
  - H Holding
  - C-3 Industrial
  - I-1 General Industrial
  - I-3 General Industrial
  - I/LI Light Industrial
  - MR-1 Mixed Resource
  - P-2 Park and Institutional
- \* Zoning areas outside study area have been excluded.

Prepared by **EDM** Environmental Design and Management Limited  
 Prepared for **NOVA SCOTIA** **HALIFAX** Regional Municipality



**BLUE MOUNTAIN/BIRCH COVE**  
**ASSESSMENT STUDY**



Data Source: NSDNR, HRM  
 Projection: 3°MTM, Zone 5  
 Horizontal Datum: ATS77  
 March 2006

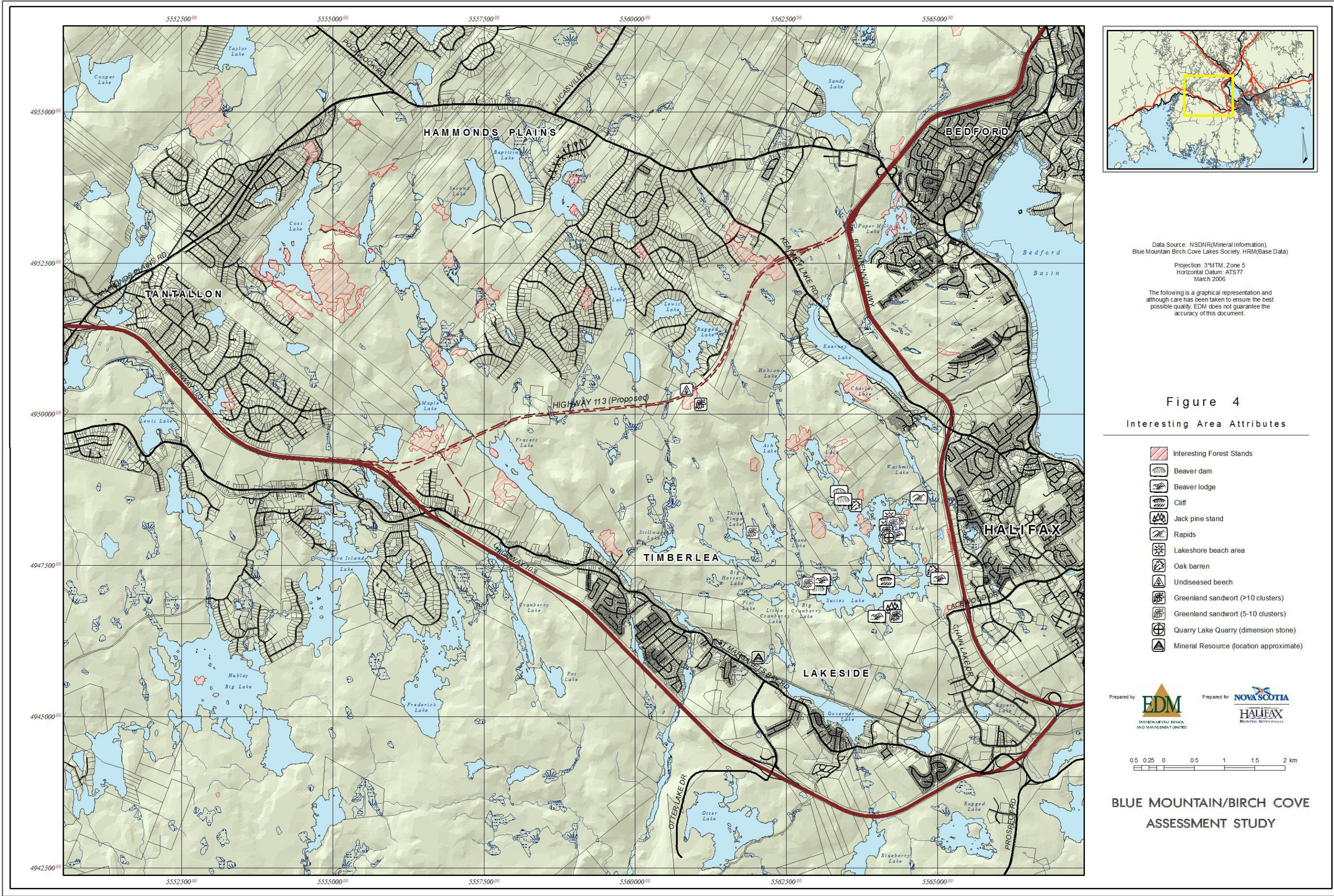
The following is a graphical representation and although care has been taken to ensure the best possible quality, EDM does not guarantee the accuracy of this document.

**Figure 3**  
 Provincial Holdings  
 Integrated Resource Management

- Category I** General Resource Use
  - Category II** Multiple & Adaptive Resource Use
  - Category III** Protected & Limited Use
- Values
- A Domestic Water Supply Areas
  - B Connectivity
  - C Significant Wildlife Habitat
  - D Significant Wetlands
  - E Old Growth
  - F Beaches
  - G Recreation / Trail Development
  - H Outstanding Scenery / Viewscapes
  - I Coastal Values
  - J Shoreline Access
  - K Provincial Park Reserve
  - L Non-Designated Sites of Ecological Significance
  - M Coastal Islands
  - N Land Lease
  - O Sites of Cultural and/or Historic Significance



**BLUE MOUNTAIN/BIRCH COVE  
 ASSESSMENT STUDY**



Data Source: NSDNR (Mineral Information),  
Blue Mountain Birch Cove Lakes Society, HRM (Base Data)

Projection: 3°M TM, Zone 5  
Horizontal Datum: ATS77  
March 2006

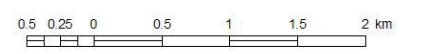
The following is a graphical representation and although care has been taken to ensure the best possible quality, EDM does not guarantee the accuracy of this document.

**Figure 4**  
Interesting Area Attributes

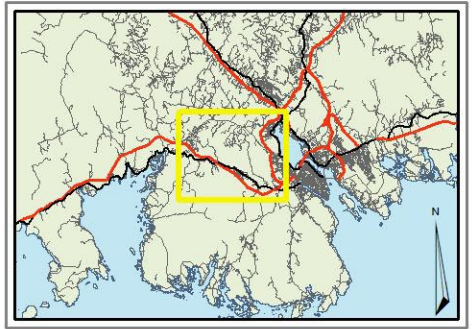
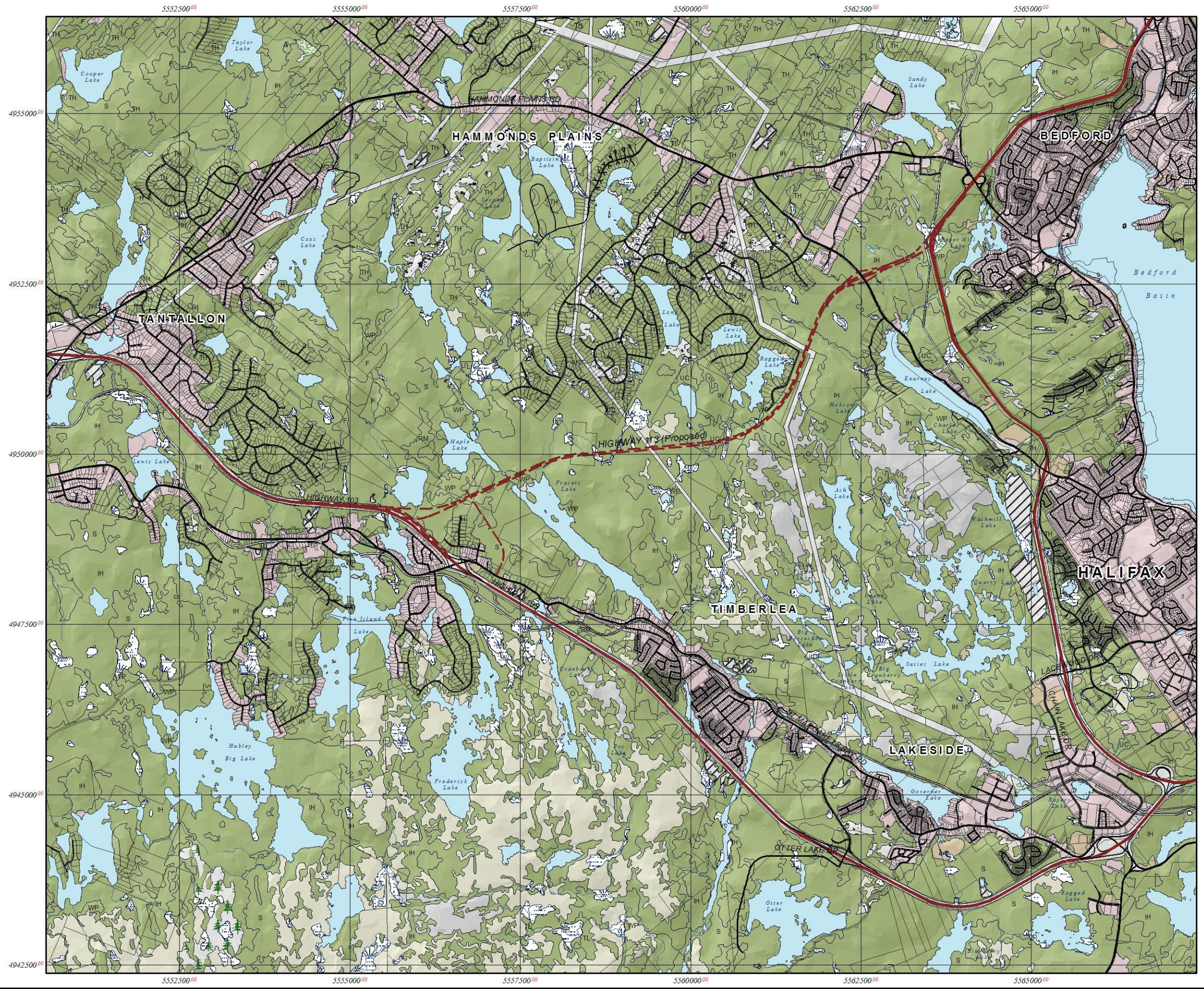
- Interesting Forest Stands
- Beaver dam
- Beaver lodge
- Cliff
- Jack pine stand
- Rapids
- Lakeshore beach area
- Oak barren
- Undiseased beech
- Greenland sandwort (>10 clusters)
- Greenland sandwort (5-10 clusters)
- Quarry Lake Quarry (dimension stone)
- Mineral Resource (location approximate)

Prepared by Environmental Design and Management Limited

Prepared for



**BLUE MOUNTAIN/BIRCH COVE  
ASSESSMENT STUDY**



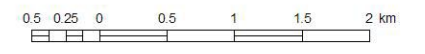
Data Source: NSDNR, HRM  
 Projection: 3°N TM, Zone 5  
 Horizontal Datum: ATS77  
 March 2006

The following is a graphical representation and although care has been taken to ensure the best possible quality, EDM does not guarantee the accuracy of this document.

Figure 5a  
 Forest Inventory

- |               |                   |
|---------------|-------------------|
| Urban         | Misc Non/Forested |
| Natural Stand | Agriculture       |
| Treated Stand | Barren            |
| Dead Stand    | Rock Barren       |
| Brush         | Gravel Pit        |
| Alders        | Wetland/Bog       |
| Plantation    | Coastal Habitat   |
| Clear Cut     |                   |

- Species Codes
- |                         |                              |
|-------------------------|------------------------------|
| WS White Spruce         | F Fir                        |
| TL Eastern Larch        | S Red/Black Spruce           |
| RM Red Maple            | H Hemlock                    |
| TH Tolerant Hardwood    | A Largetooth/Trembling Aspen |
| IH Intolerant Hardwood  | O Oak                        |
| UC Unclassified Species | WP White Pine                |



BLUE MOUNTAIN/BIRCH COVE  
 ASSESSMENT STUDY