

Data Source: EDM, HRM
 Projection: 3°MTM, Zone 5
 Horizontal Datum: ATN77
 March 2006

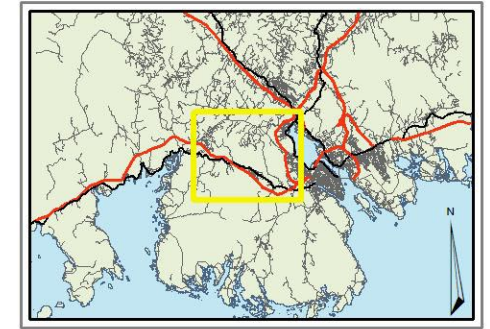
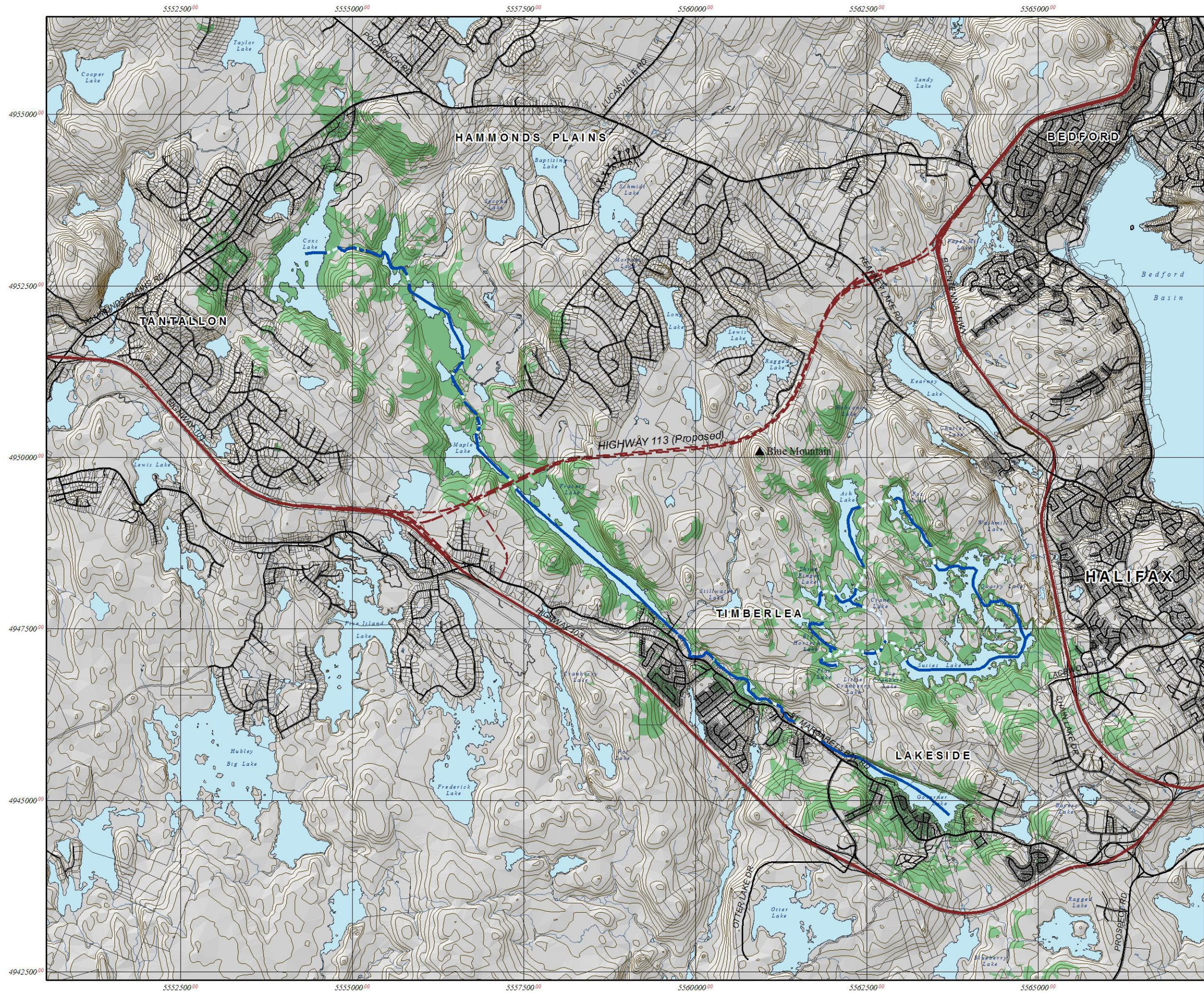
Figure 8B
 Quarry Lake Hill Viewshed Analysis

Not Visible
 Visible

Prepared by EDM ENVIRONMENTAL DESIGN AND MANAGEMENT LIMITED
 Prepared for NOVA SCOTIA HALIFAX REGIONAL MUNICIPALITY



BLUE MOUNTAIN/BIRCH COVE
 ASSESSMENT STUDY



Data Source: EDM, Canoe/Kayak Nova Scotia, HRM
 Projection: 3°N TM, Zone 5
 Horizontal Datum: ATS77
 March 2006

The following is a graphical representation and although care has been taken to ensure the best possible quality, EDM does not guarantee the accuracy of this document.

Figure 8C
 Birch Cove Lakes Viewshed Analysis

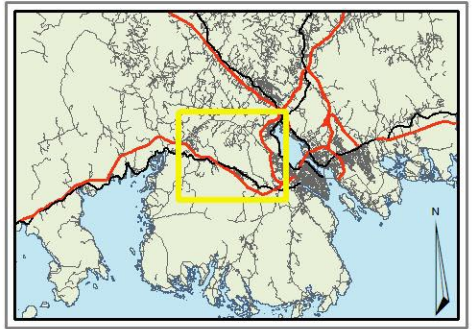
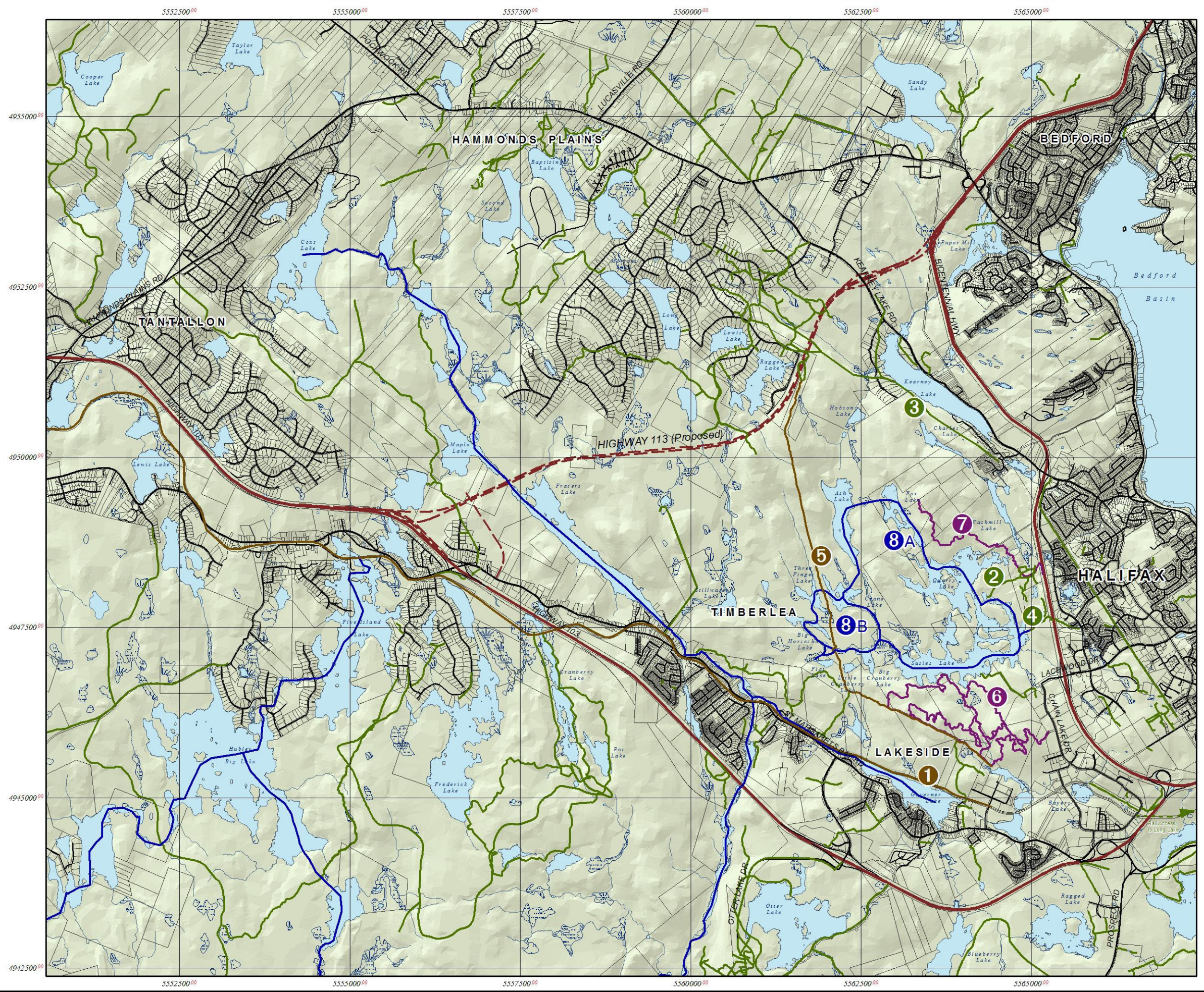
- Not Visible
- Visible
- Waterways (Viewpoints)
- Portage

* Viewshed analysis based on viewpoints from waterways, excluding portage routes.

Prepared by **EDM** ENVIRONMENTAL DESIGN AND MANAGEMENT LIMITED
 Prepared for **NOVA SCOTIA HALIFAX** REGIONAL MUNICIPALITY



BLUE MOUNTAIN/BIRCH COVE ASSESSMENT STUDY



Data Source: HRM, Chebucto Trails Association, Canoe/Kayak Nova Scotia, East Coast Mountain Biking Association, EDM
 Projection: 3°N TM, Zone 5
 Horizontal Datum: ATS77
 March 2006

The following is a graphical representation and although care has been taken to ensure the best possible quality, EDM does not guarantee the accuracy of this document.

Figure 9

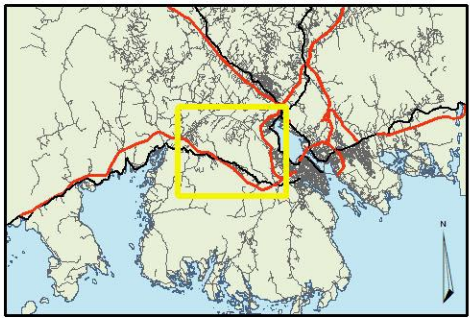
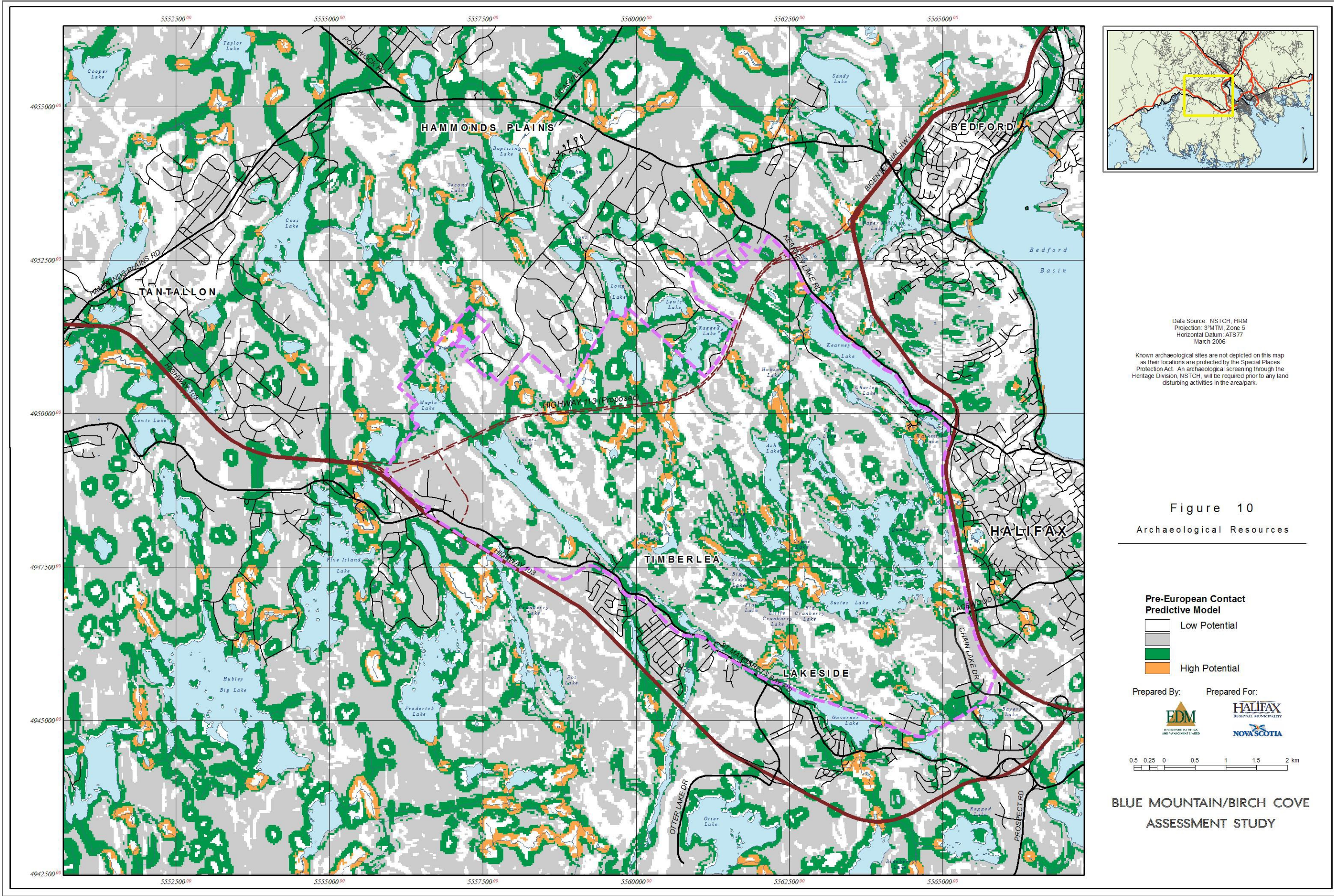
Identified Trails & Waterways

- | Hiking | Walking Trails | Mixed Use |
|--------|---|-----------|
| 1 | Beechville-Lakeside-Timberlea (BLT) Trail | |
| 2 | Quarry Lake Access Trail | |
| 3 | Kearney Lake Trail | |
| 4 | Susies Lake Access Trail | |
| 5 | Nova Scotia Power Inc. Right of Way | |
| | Mountain Bike Trail | |
| 6 | Whopper Dropper | |
| 7 | Evil Birch Trail | |
| | Waterway / Portage | |
| 8 A | Birch Cove Lakes Inner Loop | |
| 8 B | Birch Cove Lakes Outer Loop | |

Prepared by **EDM** ENVIRONMENTAL DESIGN AND MANAGEMENT LIMITED
 Prepared for **NOVA SCOTIA HALIFAX** REGIONAL MUNICIPALITY



BLUE MOUNTAIN/BIRCH COVE ASSESSMENT STUDY



Data Source: NSTCH, HRM
 Projection: 3°N TM, Zone 5
 Horizontal Datum: ATS77
 March 2006

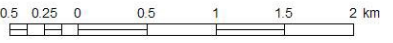
Known archaeological sites are not depicted on this map as their locations are protected by the Special Places Protection Act. An archaeological screening through the Heritage Division, NSTCH, will be required prior to any land disturbing activities in the area/park.

Figure 10
 Archaeological Resources

Pre-European Contact Predictive Model

- Low Potential
- Medium Potential
- High Potential

Prepared By:  EDM
 Prepared For:  HALIFAX REGIONAL MUNICIPALITY
 NOVA SCOTIA



BLUE MOUNTAIN/BIRCH COVE ASSESSMENT STUDY