

Data Source: EDM_HRM
 Projection: 3'NAD83, Zone 5
 Horizontal Datum: ATS77
 March 2006

The following is a graphical representation and although care has been taken to ensure the best possible quality, EDM does not guarantee the accuracy of this document.

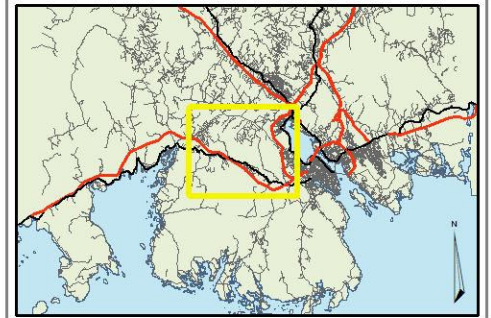
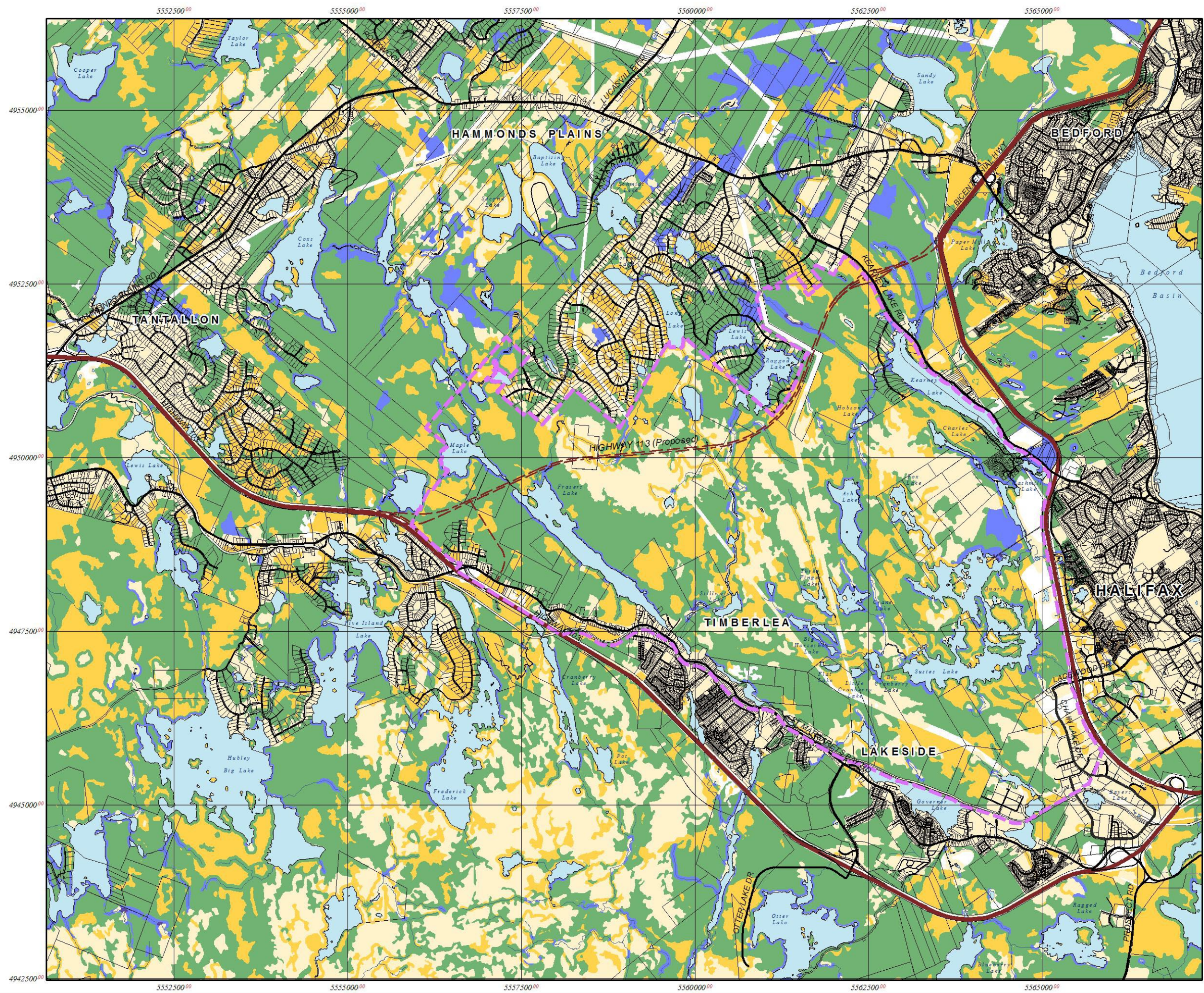
Figure 15
 Potential
 Reptile/Amphibian Habitat

Number of Species	Color
1-2	Light Yellow
3-4	Yellow
5-6	Light Green
7-8	Light Blue
9	Dark Blue

Prepared By:  EDM
 Prepared For:  HALIFAX REGIONAL MUNICIPALITY
 NOVA SCOTIA



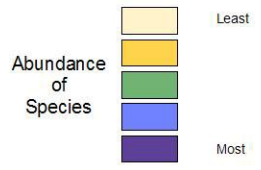
**BLUE MOUNTAIN/BIRCH COVE
 ASSESSMENT STUDY**



Data Source: EDM, HRM
 Projection: S'N TM, Zone 5
 Horizontal Datum: ATS77
 March 2006

The following is a graphical representation and although care has been taken to ensure the best possible quality, EDM does not guarantee the accuracy of this document.

Figure 16
 Species Richness

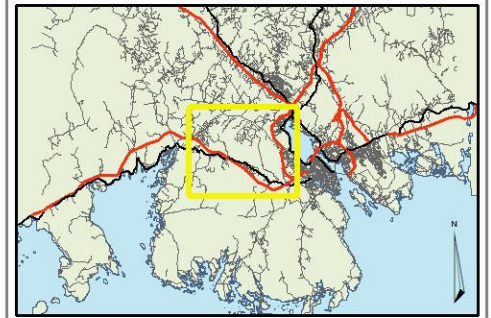
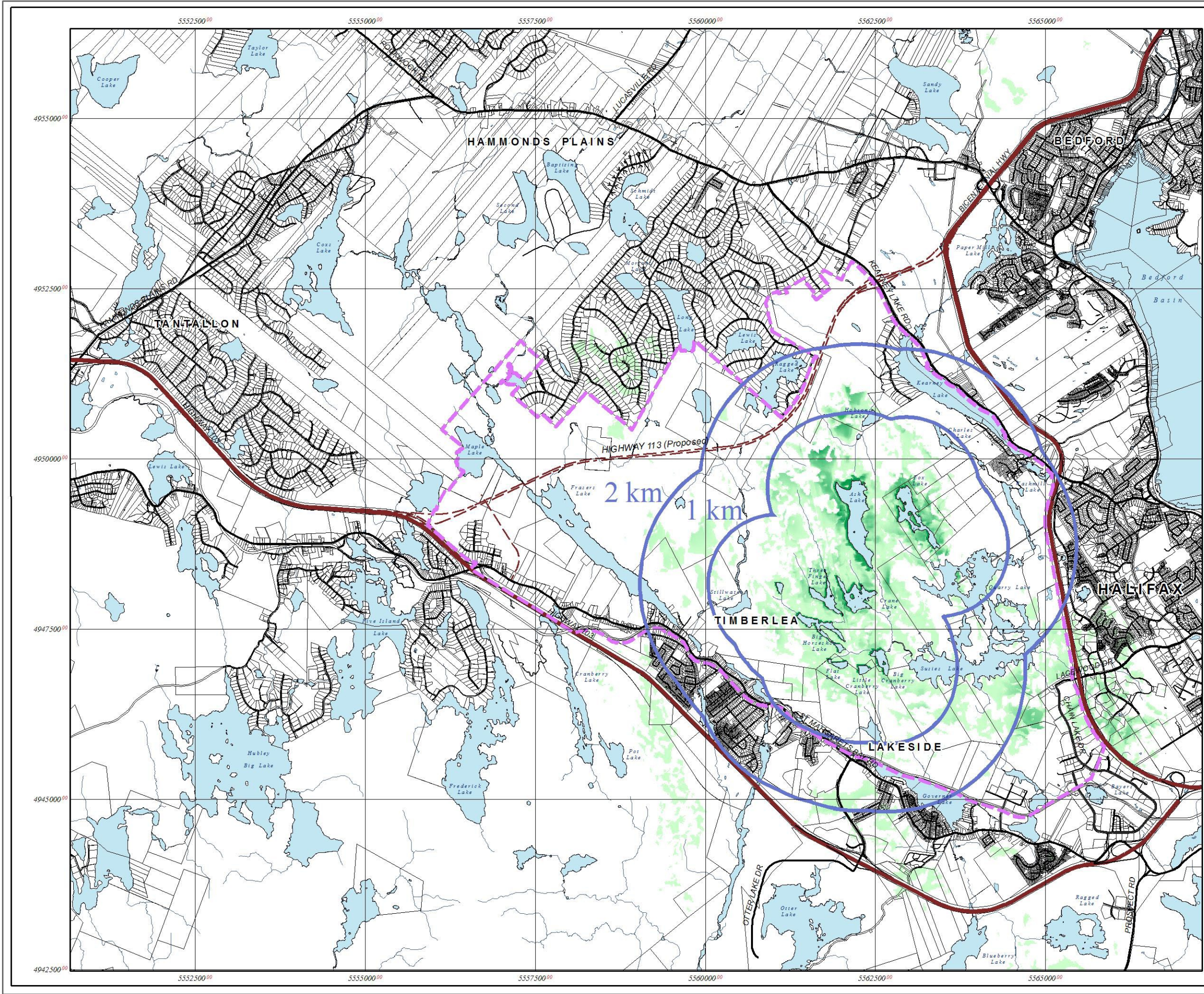


Note: Equal weight given to Mammals, Birds, and Amphibians.

Prepared By:  EDM
 Prepared For:  HALIFAX REGIONAL MUNICIPALITY
 NOVA SCOTIA




BLUE MOUNTAIN/BIRCH COVE
ASSESSMENT STUDY

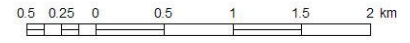


Data Source: EDM HRM
 Projection: 3°MTM, Zone 5
 Horizontal Datum: ATS77
 March 2006

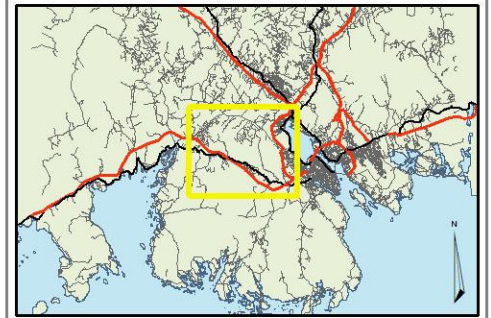
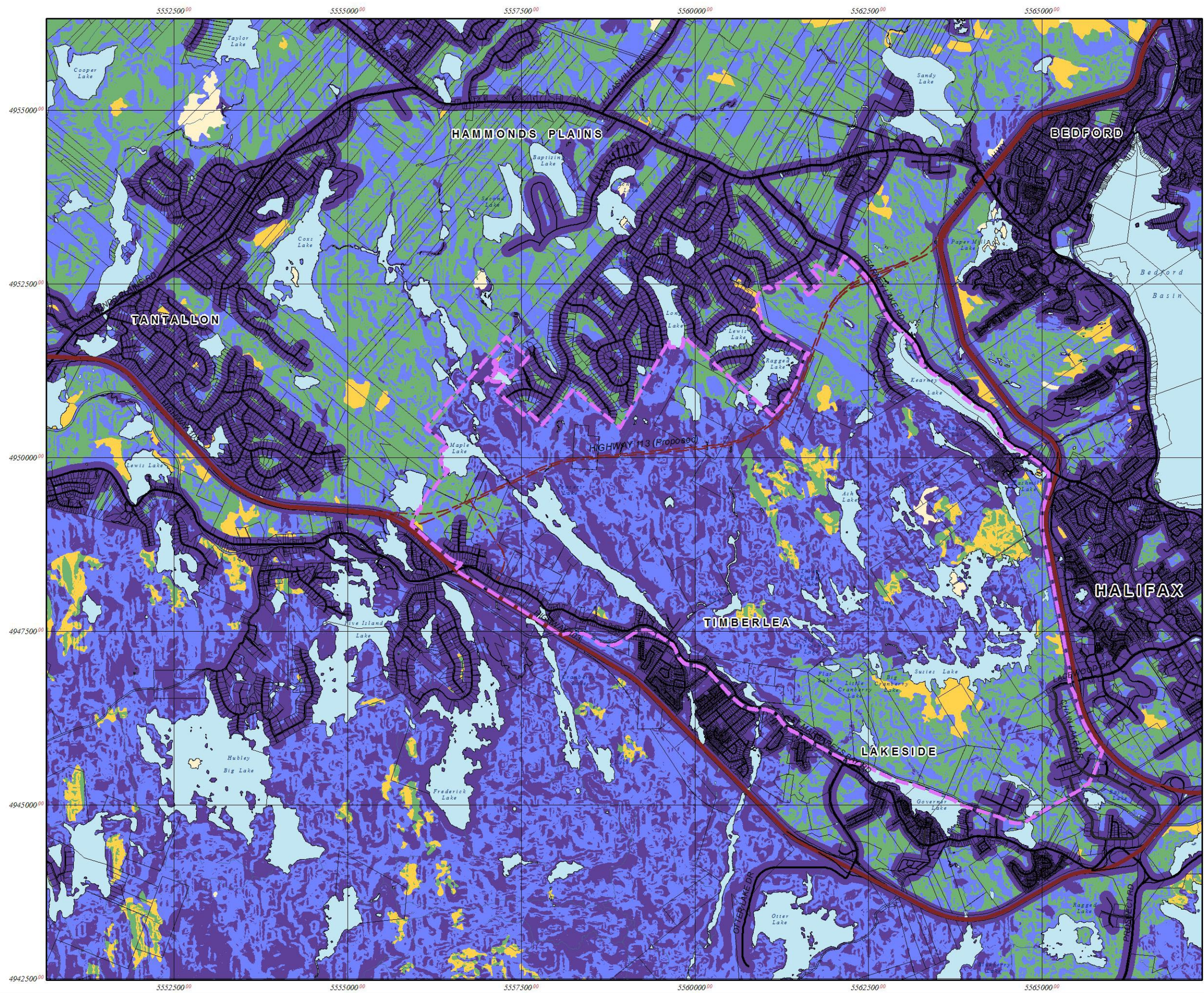
Figure 17
 Views From 'Core' Lakes

-  Core Lake Buffers
- White = Not Visible
- Light Green = Less Visible
- Dark Green = More Visible

Prepared By:  EDM
 Prepared For:  HALIFAX REGIONAL MUNICIPALITY
 NOVA SCOTIA



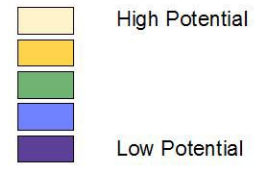
**BLUE MOUNTAIN/BIRCH COVE
 ASSESSMENT STUDY**



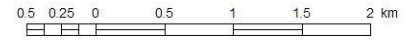
Data Source: EDM, HRM
 Projection: 3°MTM, Zone 5
 Horizontal Datum: ATS77
 March 2006

The purpose of this model is to assess the 'raw' potential of the landscape for active recreation. It is based upon the hiking model developed for NSTCH by EDM. Existing trails and other infrastructure are not considered.

Figure 18
 Active Recreation Suitability



Prepared By: EDM
 Prepared For: HALIFAX REGIONAL MUNICIPALITY
 NOVA SCOTIA



BLUE MOUNTAIN/BIRCH COVE
 ASSESSMENT STUDY