

Data Source: EDM, HRM
 Projection: 3°N TM, Zone 5
 Horizontal Datum: ATS77
 March 2006

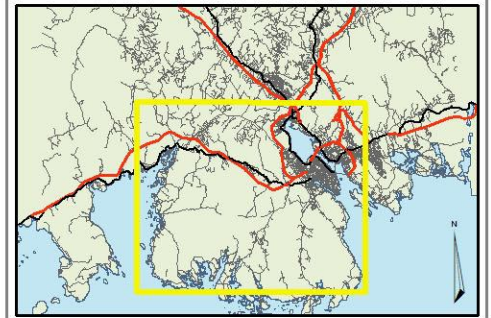
Figure 19
 Model Composite

Yellows = Best
 Greens = Mid
 Blues/Purples = Worst

Prepared By: EDM
 Prepared For: HALIFAX REGIONAL MUNICIPALITY
 NOVA SCOTIA



BLUE MOUNTAIN/BIRCH COVE
 ASSESSMENT STUDY



Data Source: EDM, HRM
 Projection: 3°M TM, Zone 5
 Horizontal Datum: ATS 77
 March 2006

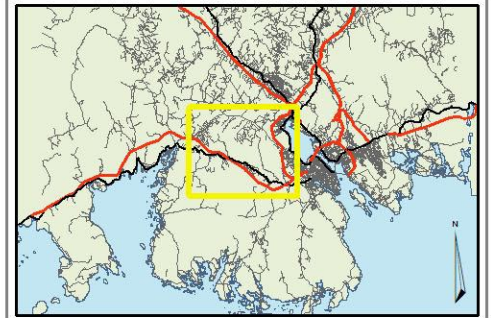
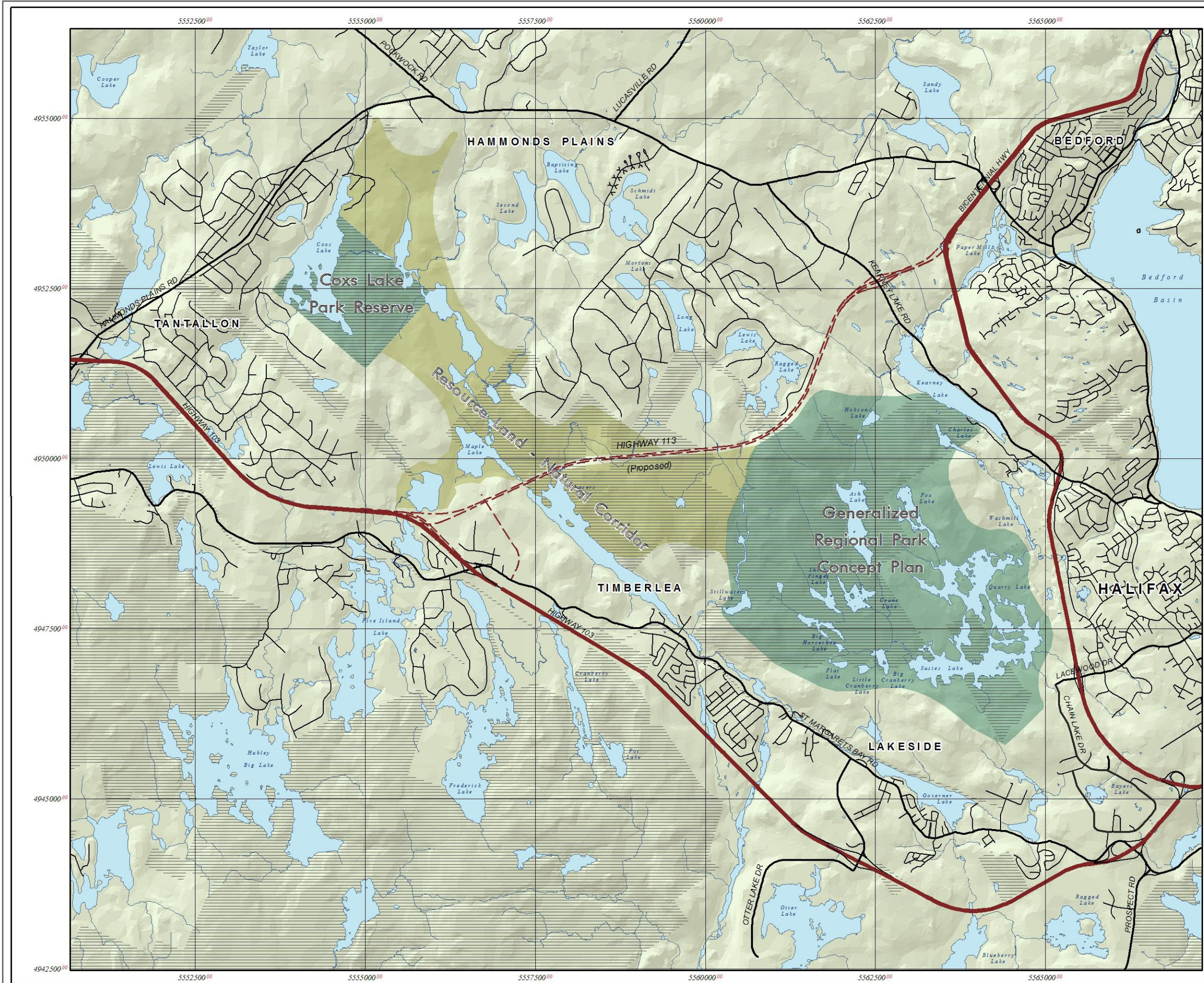
The following is a graphical representation and although care has been taken to ensure the best possible quality, EDM does not guarantee the accuracy of this document.

Figure 20
Landscape Connectivity
 Western Halifax Regional Municipality

- Forest Patches
- Essential Corridors
- ↔
 Road Crossings



BLUE MOUNTAIN/BIRCH COVE
ASSESSMENT STUDY



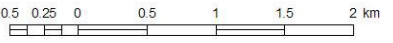
Data Source: EDM, NSDNR, HRM
 Projection: 3°M TM, Zone 5
 Horizontal Datum: ATS77
 March 2006

This figure is a concept plan and should not be interpreted as a final design.

Figure 21
 Generalized Concept Plan

- Generalized Park Land
- Resource Lands/Natural Corridor
- Crown Land

Prepared by **EDM** ENVIRONMENTAL DESIGN AND MANAGEMENT LIMITED
 Prepared for **NOVA SCOTIA** **HALIFAX** REGIONAL MUNICIPALITY



**BLUE MOUNTAIN/BIRCH COVE
 ASSESSMENT STUDY**

APPENDIX B: PROPERTY OWNERSHIP

Appendix B has been intentionally omitted.

APPENDIX C: INTERVIEW CONTACTS

Contact	Name(s)
HRM	
- Geographic Information Services	Jim Gannon
- Planning and Development	Angus Schaffenburg
- Planning and Development	Jim Donovan
- Planning and Development	Kelly Denty
- Planning and Development	Rosemary McNeil
- Public Works and Transportation	Dave McCusker
- Public Works and Transportation	Roxanne MacInnes
- Real Property and Asset Management	Jan Skora
- Real Property and Asset Management	Peter Bigelow
- Regional Planning	John Charles
- Tourism, Recreation and Culture	Carol Macomber
Province of Nova Scotia	
- Environment and Labour	David MacKinnon
- Natural Resources	Hugh Gillis
- Nova Scotia Museum	Bob Ogilvie
- Sport and Recreation Commission	Ted Scrutton
- Sport and Recreation Commission	Jody Conrad
- Tourism and Culture	Mary Jo
- Transportation and Public Works	Gerald Parks
- Transportation and Public Works	Janice Harland
Government of Canada	
- Environment Canada	Paul Chamberlain
Stakeholder Organizations	
- Bedford Watershed Advisory Board	Don Lowther
- Birch Cove Lakes Wilderness Society	Chris Miller
- BLT Rails to Trails	Cathy Kelfenz
- Canadian Nature Conservancy	Dr. Bill Freedman
- Canadian Parks and Wilderness Society - Nova Scotia Chapter	Dr. Martin Wiliston
- Canoe Kayak Nova Scotia	Dusan Soudek
- East Coast Mountain Biking	Sue Earle
- Ecology Action Centre Wilderness Committee	Raymond Plourde
- Five Bridge Wilderness Heritage Trust	Beth McGee
- Halifax Field Naturalists	Bob & Wendy MacDonald
- Northwest Trails Association	Bob & Wendy MacDonald
- Nova Scotia Nature Trust	Duncan Bayne
- Nova Scotia Trails Federation	Jim Vance
- Tourism Industry Association of Nova Scotia	Jennifer Westclough-MacLean
Landowners	
- Annapolis Basin Group	David Nantes
- Armco Communities/Kimberly-Lloyd Developments	Rob MacPherson
- Barrett Lumber Company	David Barrett
- Fraser Lakes Development	
- Gateway Quarry	
- Greater Homes	Louis deMontbrun
- John Fiske	John Fiske
- Sisters of Charity	Sister Joan O'Keefe